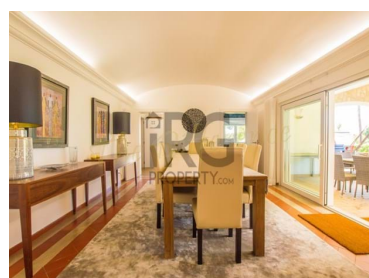




## Quarteira - Villa



**5** Bedrooms    
 **6** Bathrooms    
 **537** Area (m<sup>2</sup>)    
 **2637** Land Area (m<sup>2</sup>)    
**2 900 000 €** (EUR €)

## Imposing Traditional Villa facing the Old Golf Course in the heart of Vilamoura

This majestic Villa is located at the end of a quiet Cul de Sac in the old Village in Vilamoura. The gardens open onto the 10 holes of the Pinhal Golf course and there are good Sea views along the fairway. The location is one of the best in Vilamoura as the golf and sea views can't be beaten. Add to this that the Hilton Hotel & Spa, Pinhal Clubhouse & driving range, shops & restaurants, and the Vilamoura Tennis Club are all within 4 minutes walk. The Marina is also within walking distance.

The property has 5 full suites all opening to the pool or large private terraces on the first floor. Servant quarters and double garage are in a separate wing. The 2 dining rooms are connected to a spacious kitchen. The living room and large covered terrace open out onto the gardens and golf.

T +351 289 313 325 <sup>1</sup> · T +44 800 015 9997 · E [info@irgproperty.com](mailto:info@irgproperty.com)

Estrada Quinta do Lago, Almancil, 8135-160

AMI 8687

<sup>1</sup> (Call to national fixed network) | <sup>2</sup> (Call to national mobile network)



The house is 620m<sup>2</sup> of construction and sits on a plot of 1900m<sup>2</sup>

The pool house and pool sit on a separate plot of 900m<sup>2</sup>

The total land is 2800m<sup>2</sup> but feels much bigger as it has 70 meters running along the golf course.

The pool house plot has a separate registration and entrance and can be split off of the main property. A new separate vila of 420m<sup>2</sup> plus basement could be built there.

## Property Features

- Energetic certification: D

T +351 289 313 325 <sup>1</sup> · T +44 800 015 9997 · E [info@irgproperty.com](mailto:info@irgproperty.com)

Estrada Quinta do Lago, Almancil, 8135-160

AMI 8687

<sup>1</sup> (Call to national fixed network) | <sup>2</sup> (Call to national mobile network)