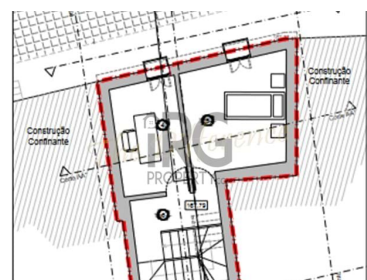
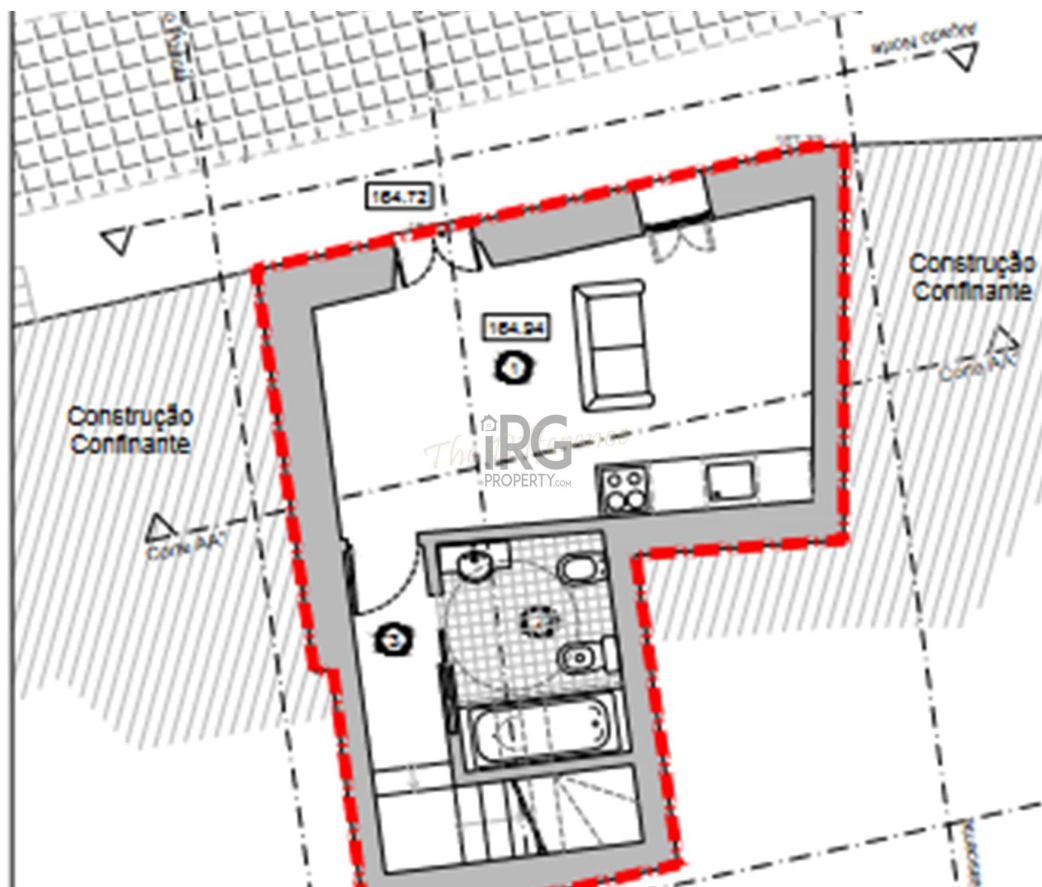




Loulé (São Clemente) - Townhouse



2 Bedrooms
1 Bathrooms
93 Area (m²)

110 000 €
(EUR €)

House to recover in historic area of Loulé

House to recover in the city center of Loulé .

It has approved project for construction of a villa V1 +1 of two floors, with total construction area 93.5m². Having been planned, the ground floor consisted of kitchenette and sanitary installation and the first floor will be completed by bedroom and office, with terrace of 27.5m² with partial view of the Islamic baths and the castle.

Excellent investment taking into account the rental (AL) or as first housing. Schedule your visit today.

Property Features

T +351 289 313 325 ¹ · T +44 800 015 9997 · E info@irgproperty.com

Estrada Quinta do Lago, Almancil, 8135-160
AMI 8687

¹ (Call to national fixed network) | ² (Call to national mobile network)



T +351 289 313 325 ¹ · T +44 800 015 9997 · E info@irgproperty.com

**Estrada Quinta do Lago, Almancil, 8135-160
AMI 8687**

¹ (Call to national fixed network) | ² (Call to national mobile network)